

Rayat Shikshan Sanstha's

Annasaheb Awate Arts, Commerce and Hutatma Babu Genu Science College,

Manchar, Tal. – Ambegaon Dist.-Pune

Student's Satisfaction Survey Report

College has been established feedback committee, which takes the feedback from the stake holders, employee, parents and peers from time to time for the overall development of college. In the academic year 2018-2019 the feedback from students about the evaluation of college was taken by using 4 point scale. The students of college upload their feedback on the college website. The overall level of the student's satisfaction was found to be 96%. However students noted some suggestions about the overall development of college. These are to strengthen competitive examination centre, to start course for mushroom cultivation, to increase the e- learning resources which includes numbers of computers and strengthen the financial students support by providing scholarship. The students are satisfactorily agreed with the university syllabus since the present syllabus included is having current and applied contents. Almost all the teaching faculty delivered their regular lectures with full preparation and also teachers are able to communicate with students with obediently and effectively. They took very sincere effort for conducting their continuous internal evaluation process which includes Units tests, Tutorials, Home assignment, Midterm examination in addition to the regular University examination for each class as per schedule assigned to individual teacher. The institute has been taken active interest in promoting internship, training programmes , field project for the B.Voc courses, The industrial trips, field visit, Institutional visits are regularly organized for each department to offer learning interests and job opportunities for students. The college established the Mentor - Mentee scheme as institutional best practices for the student's academic, social and emotional growth. The students are guided rightly on their overall performance and difficulties. Teachers built up the expected competencies, course outcomes and programme outcomes among the students. The teacher do the SWOT analysis of the students and guide them as per their needs. Teachers are able to identify the strengths and weakness of students and encourage and guide respectively and prepare them by providing right level of challenges.

The head of institute forms various college working Academic, Curricular, Extracurricular and Extension activity committees. Each committee attracts the students towards extracurricular activities. and take care to engage students in participating various activities of the college. A few students have been suggested to strengthen and inculcate soft skills, life skills and employability skills among the students. The college has been stated add-on courses and various certificate courses like Talley, Mobile repairing accounting sericulture etc. to ensure the skill and employability among students. Most of teachers are

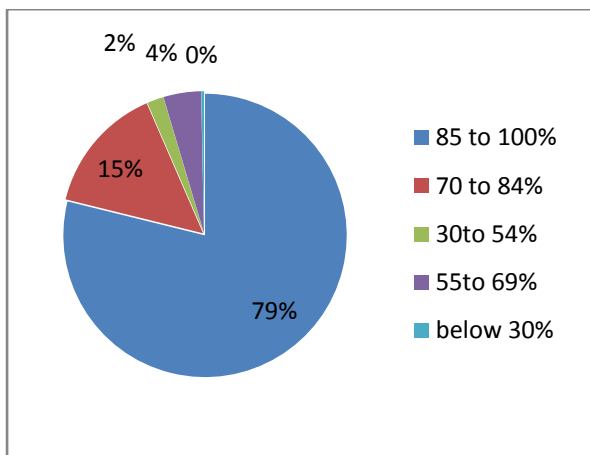
using ICT tools such as LCD projector, Multimedia, etc. in their regular teaching for continuous up gradation of quality of the teaching learning process. The overall Students satisfaction survey rating about quality of teaching-learning process of the institute was found to be good. The following important suggestions are given by students. These are to develop the competitive exam. Center, to organize the workshop on mushroom cultivation, to start the MCA programme and to flourish the earn and learn scheme.

Feedback was prepared with the help of questionnaires. Total 629 feedback forms were collected from students. Response expected from the students on college is as follows:

Following are question for online student Satisfaction survey regarding teaching learning process

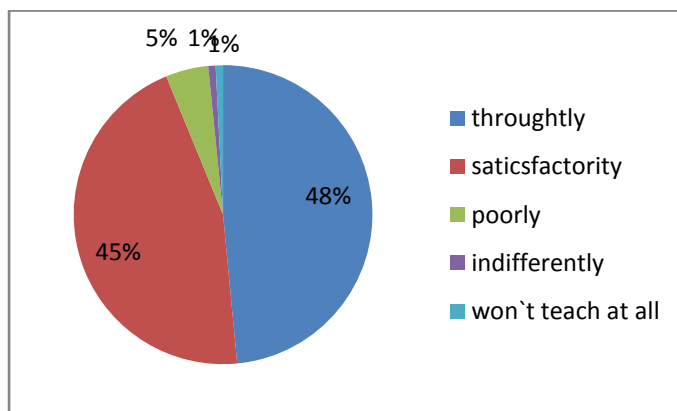
1) How much of the syllabus was covered in the class?

4)85 to 100% - 4963)70 to 84%--92 2)30to 54%--121)55to 69%---27
 0-below 30%---02



2) How well did the teacher prepare for the classes?

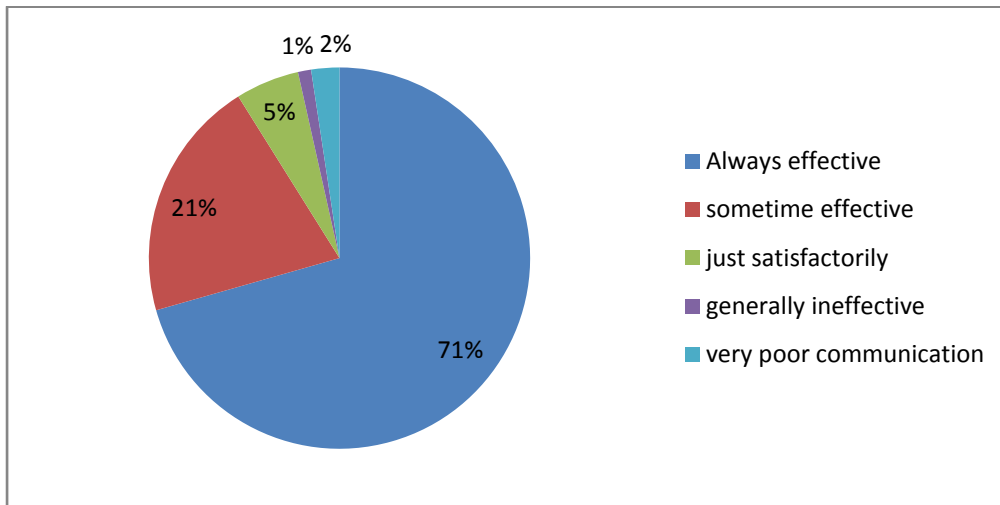
4-throughly ---3053-saticsfactority---2852-poorly---291-indifferently ---05
 0- won`t teach at all---05



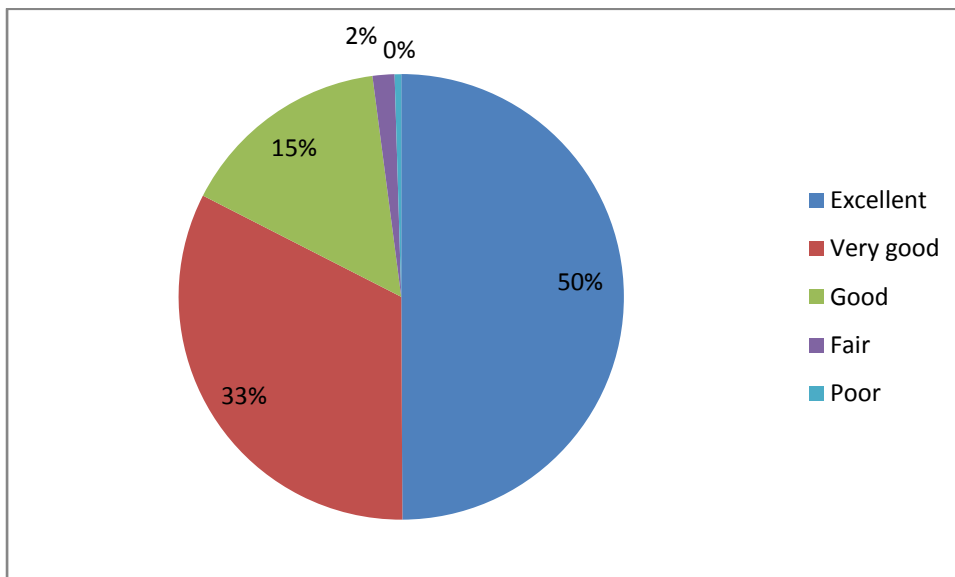
3) How well were the teachers able to communicate?

4-Always effective ----4443-sometime effective----1292-just satisfactorily---34

1-generally ineffective -----070-very poor communication-15

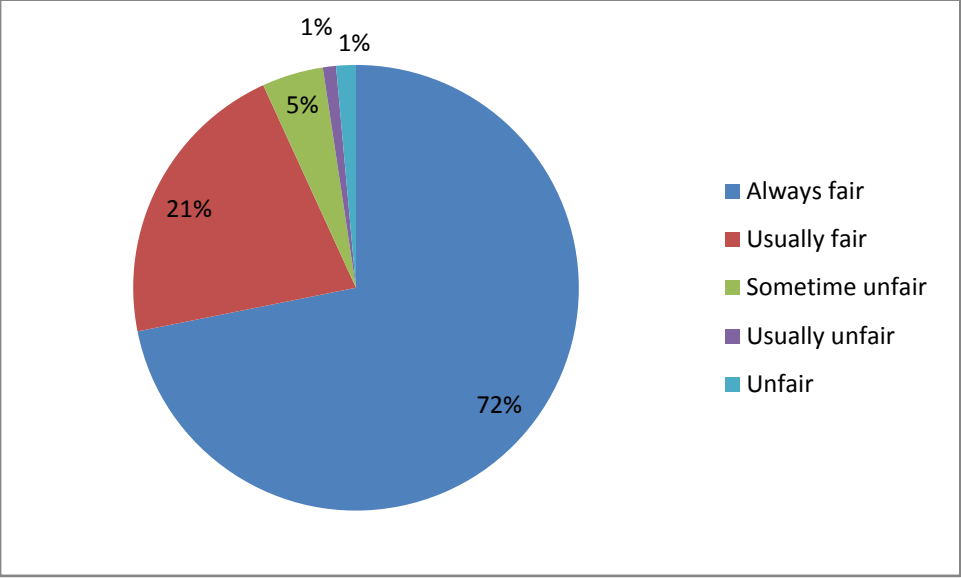


4) The teachers approach to teaching can best be described as.4- Excellent---3143-Very good---2052-Good ---971-Fair ----100-Poor-03



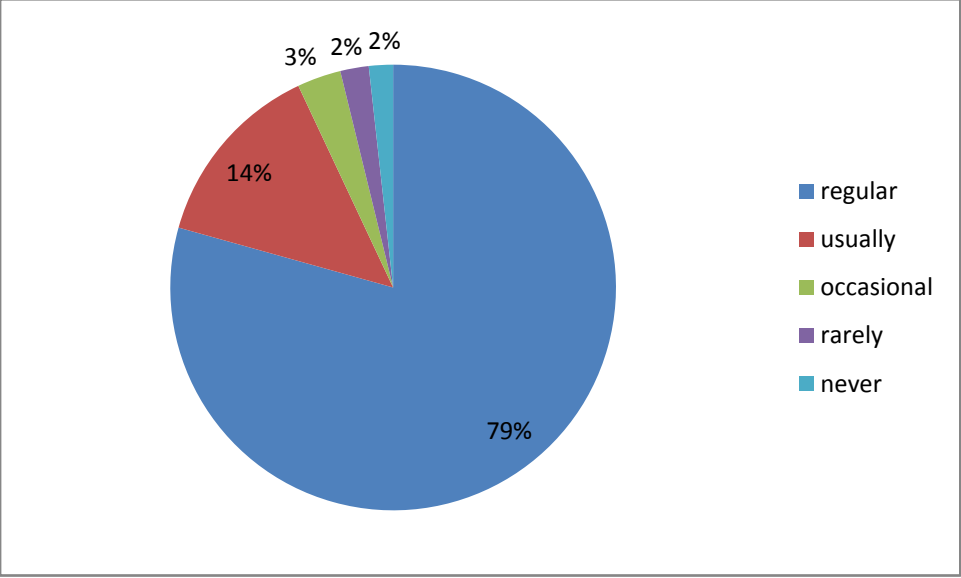
5) Fairness of the evaluation process by the teachers.

4-Always, fair---4523-Usually fair ---1342-Sometime unfair ---281-Usually unfair---06
 0-Unfair ----09



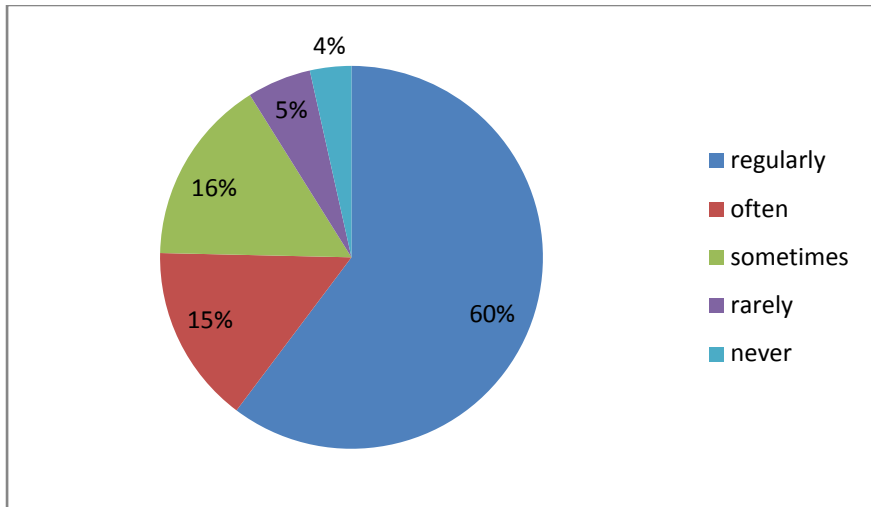
6) Was your performance in assignments discussed with you?

4-regular=4993-usually =862-occasional =201-rarely =130-never---11



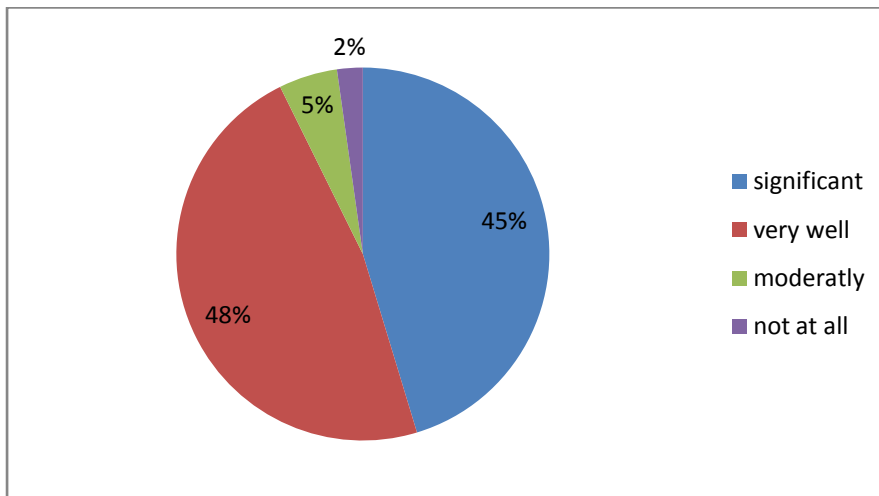
7) The institute takes active interest in promotion internship, student exchange, field visit opportunities for student.

4-regularly =3793-often=952-sometimes =991-rarely =340-never =22



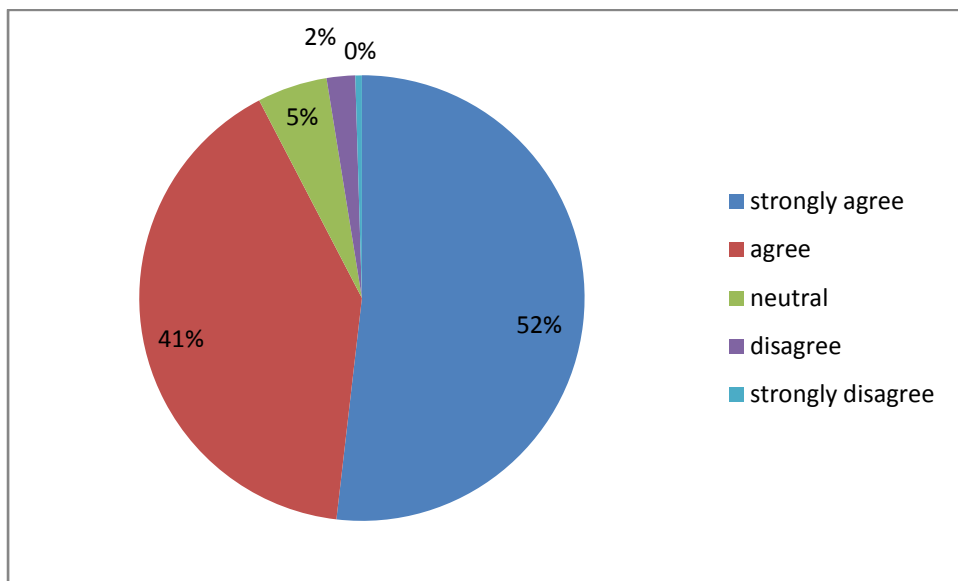
8) The teaching and mentoring process in your institution facilitates you in cognitive social and emotional growth.

4-significant=2853-very well=2982-moderately=320-not at all=14



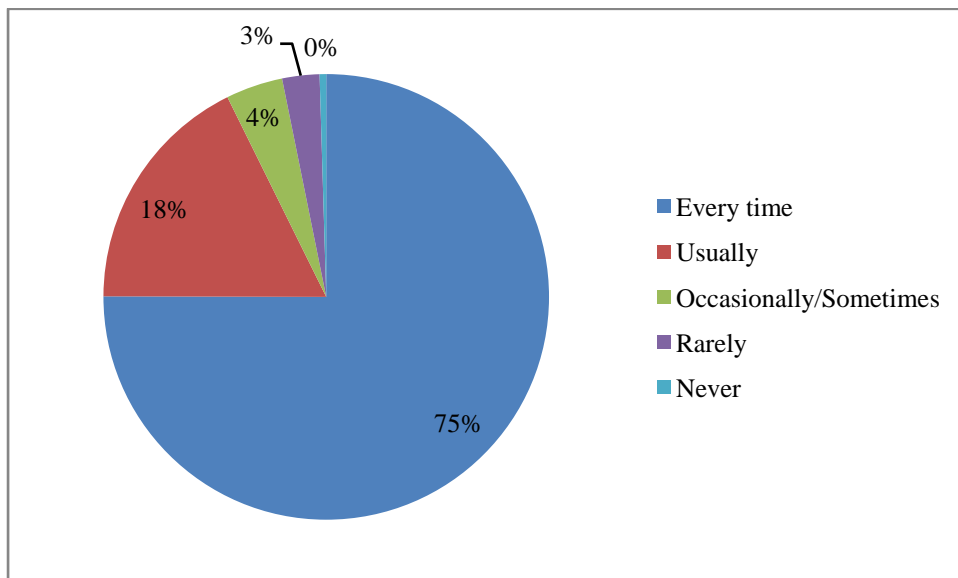
9) The institution provident multiple opporinuties to learn and growth.

4-strongly agree=326 3-agree=255 2-neutral=32 1-disagree=13 0-strongly disagree =03



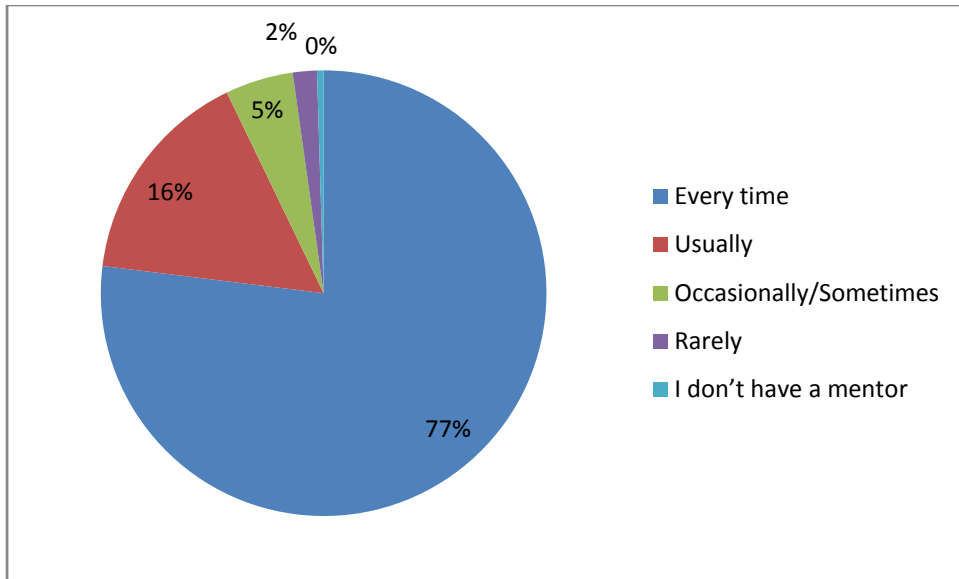
10) Teachers inform you about your expected competencies, course outcome and programme outcomes.

4-Every time=472 3-Usually=111 2-Occasionally/Sometimes=26 1-Rarely=17 0-Never =03



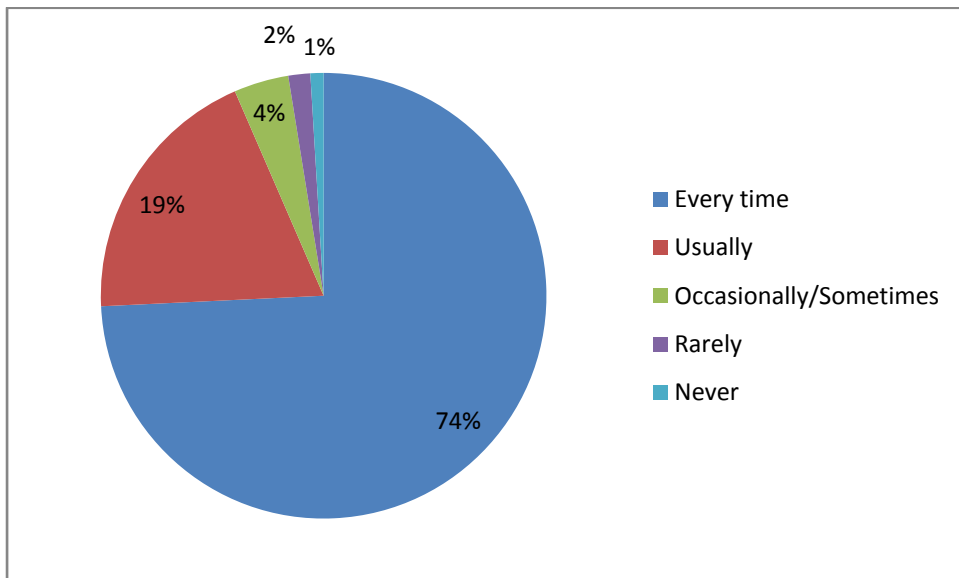
11) Your mentor does a necessary follow-up with an assign task to you.

4-Every time=484 3-Usually=100 2-Occasionally/Sometimes=31 1-Rarely=11 0-I don't have a mentor=03



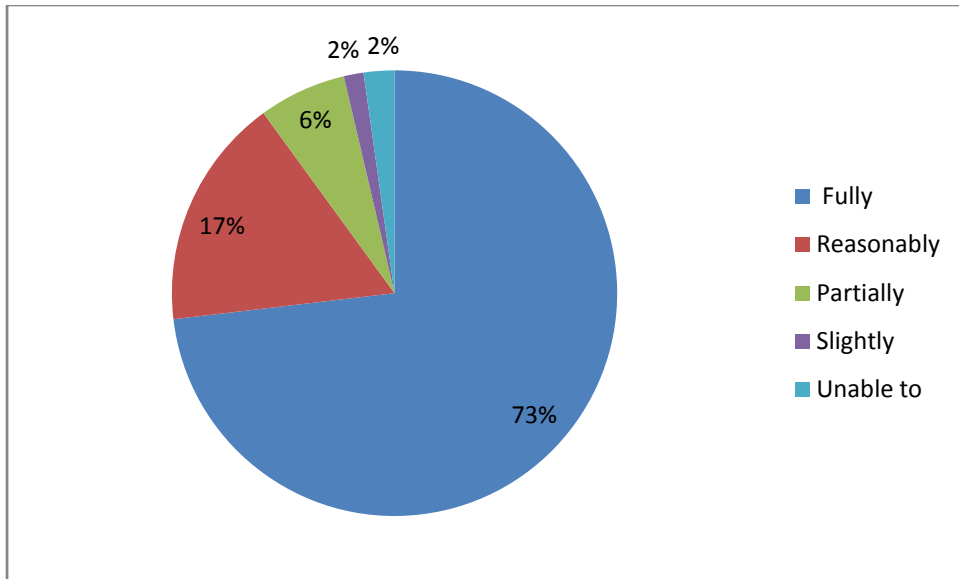
12) The teacher illustrates the concepts through examples and applications.

4-Every time=467 3-Usually=121 2-Occasionally/Sometimes=25 1-Rarely=10 0-Never=06



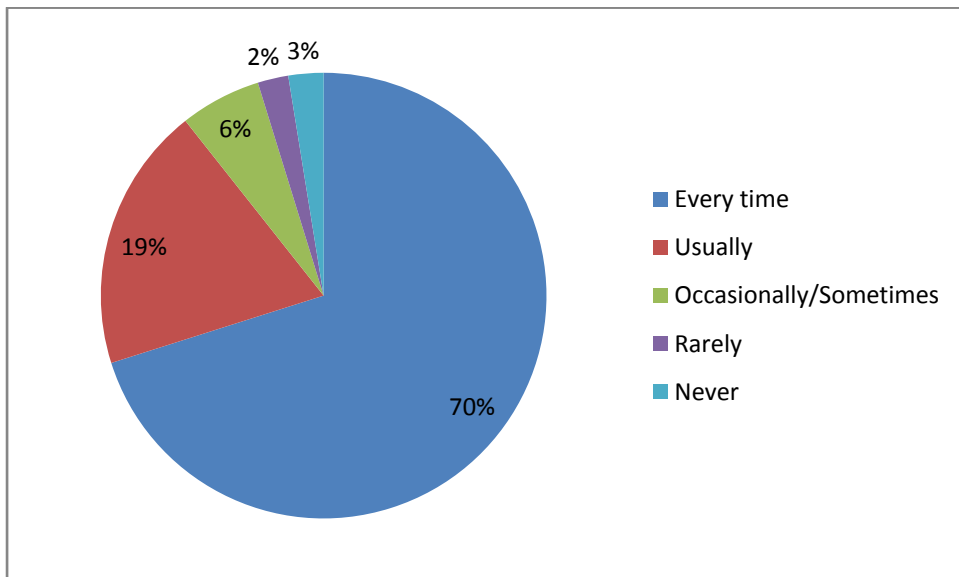
13) The teacher identifies your strengths and encourages you with providing right level of challenges.

4-Fully =460 3-Reasonably=106 2-Partially=40 1-Slightly=09 0-Unable to =14



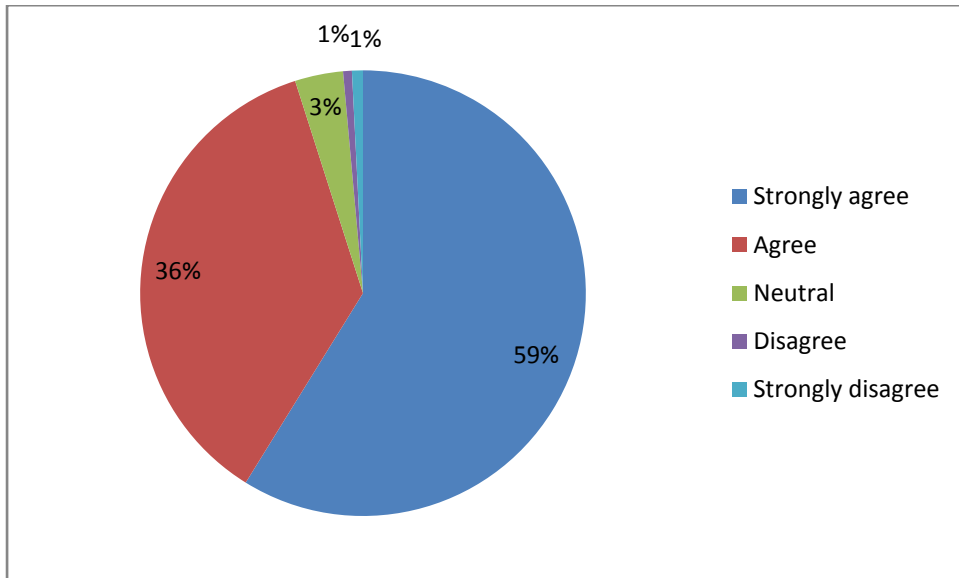
14) Teachers are able to identify your weakness and help you to overcome them.

4-Every time=441 3-Usually=121 2-Occasionally/Sometimes=37 1-Rarely=14 0-Never=16



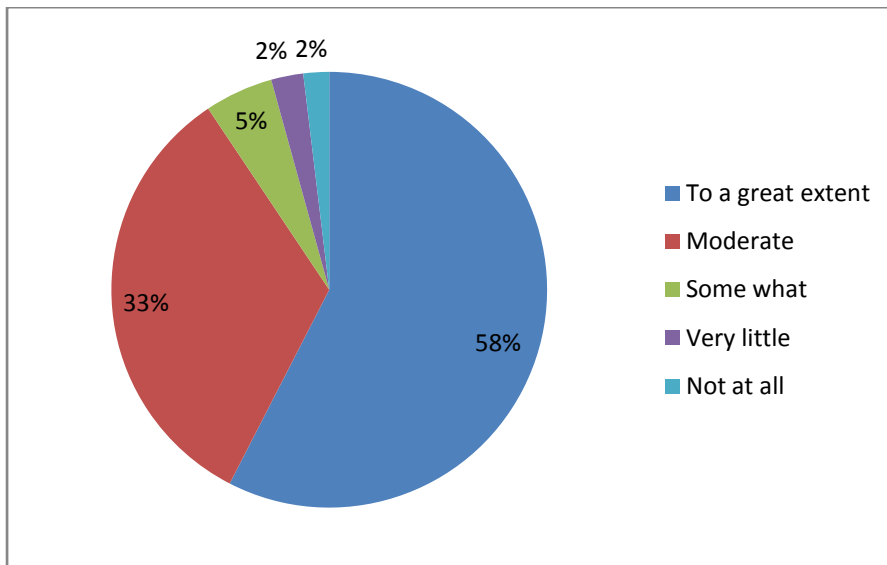
15) The institution makes effort to engage students in the monitoring, review and continuous quality improvement of the teaching learning process.

4-Strongly agree=370 3-Agree=228 2-Neutral=22 1-Disagree=04 0-Strongly disagree =05



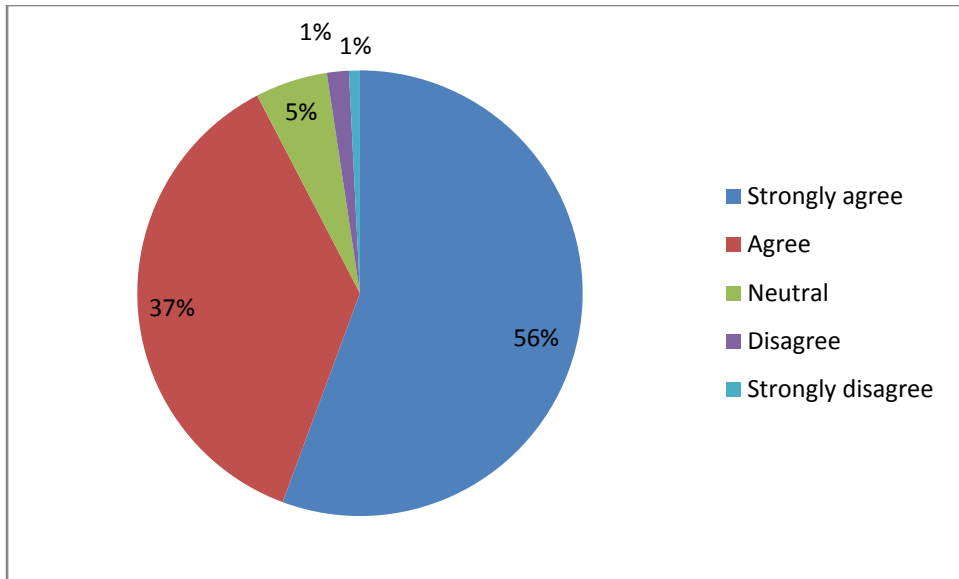
16) The institute / teachers use students centric methods, such as experimental learning, participative learning and problem solving methodologies for enhancing learning experiences.

4-To a great extent=3623-Moderate=2082-Some what=321-Very little=150-Not at all =12



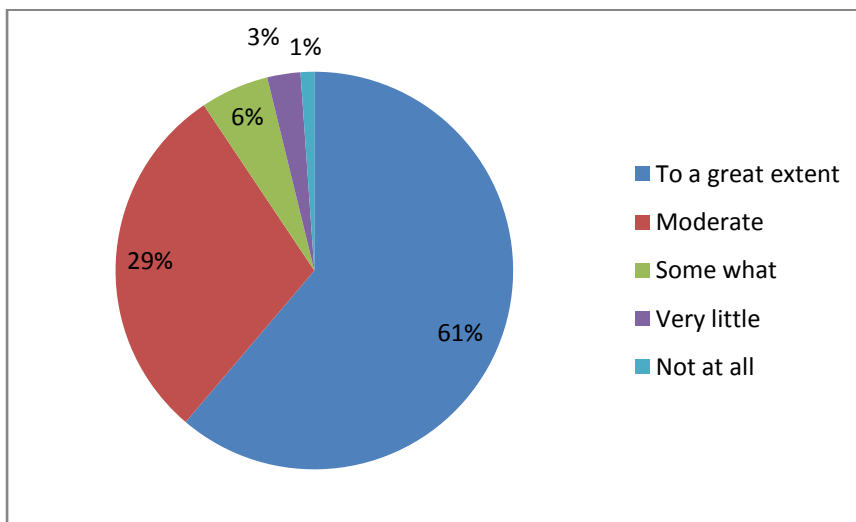
17) Teacher encourages you to participate in extracurricular activities.

4-Strongly agree=350 3-Agree=231 2-Neutral=33 1-Disagree=10 0-Strongly disagree=05



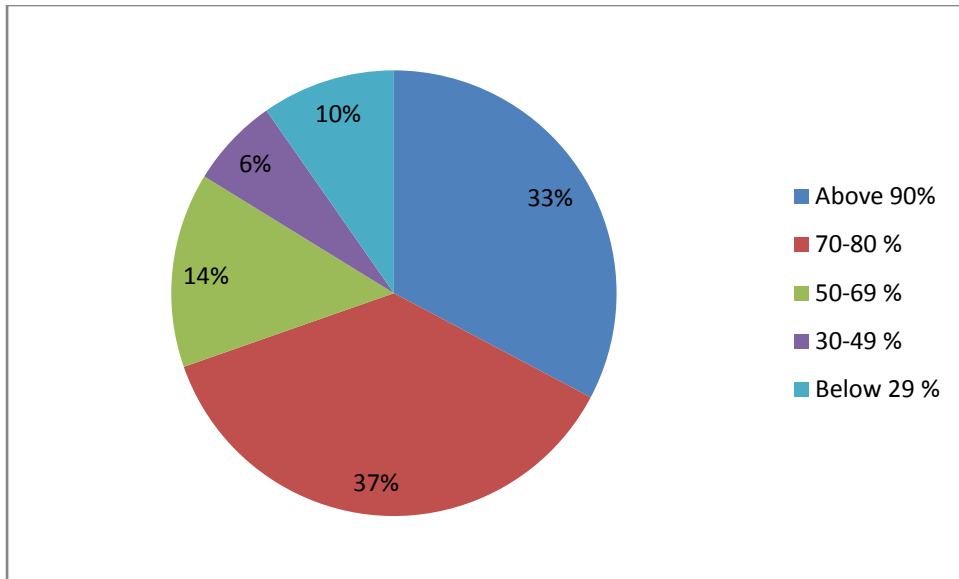
18) Efforts are made by institute / teachers to inculcate soft skills, life skills and employability skills to make you ready for the world of work.

4-To a great extent=385 3-Moderate=185 2-Some what=35 1-Very little=17 0-Not at all =07



19) What percentage of teachers use ICT tools such as LCD projector, Multimedia, etc. while teaching.

4-Above 90%=206 3-70-80 %=232 2-50-69 %=89 1-30-49 %=41 0-Below 29 %=61



20) The overall quality of teaching –learning process in your institute is very good.

4-Strongly agree=333 3-Agree=238 2-Neutral=44 1-Disagree=11 0-Strongly disagree =03

